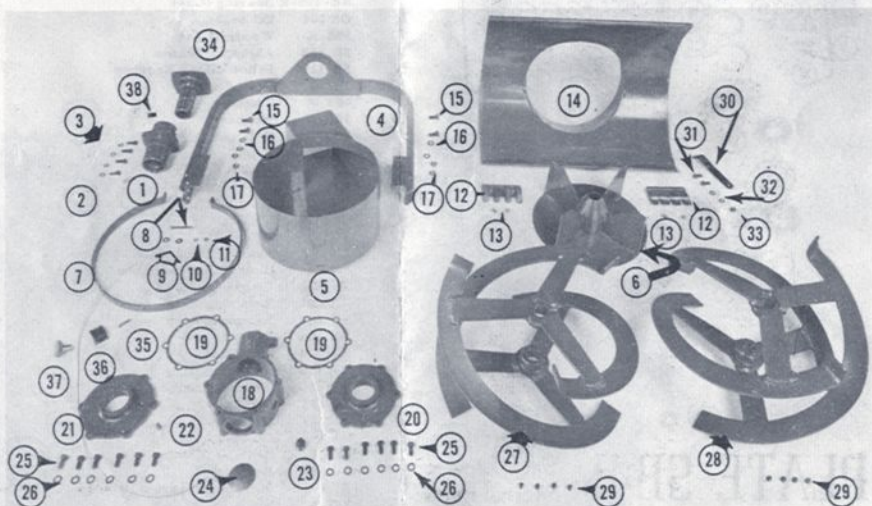


Gravely Snowblower...

PARTS AND PRICE LIST

EFFECTIVE OCTOBER 1, 1957

Snowplow



KEY: NS-NOT SHOWN NN-NO PART NUMBER,
ORDER BY DESCRIPTION
PRICES SUBJECT TO CHANGE WITHOUT NOTICE

PLATE SB-1

Snowblower External Parts

Photo No.	Part No.	Description	Price	Photo No.	Part No.	Description	Price
1	SB 103-A	Swivel Casting	6.05	20	SB 102-L	Bearing Housing	2.48
2	110 S	Screw	.07	21	SB 102-R	Bearing Housing with Grease Plug Hole	2.48
3	305 W	Washer	.01	22	701-P	Pipe Plug	.07
4	N/N	Frame Complete	17.05	23	702 VP	Pipe Plug	.15
5	N/N	Welded Assembly Fan Housing Complete Assembly	20.13	24	SB 334	Expansion Plug	.17
6	N/N	Fan Assembly Complete, Welded	17.05	25	121 S	Screw	.06
7	SB 313	Thrust Band	.72	26	305 W	Washer	.01
8	149 S	Screw	.08	27	N/N	Reel Complete Welded Assembly, Right Hand	22.55
9	401 W	Washer	.01	28	N/N	Reel Complete Welded Assembly, Left Hand	22.55
10	304 W	Washer	.01	29	804 A	Set Screw	.13
11	201 N	Nut	.02	30	SB 319	Brace	.24
12	SB 104	Skid	1.23	31	110 S	Screw	.07
13	140 S	Screw	.07	32	305 W	Washer	.01
14	N/N	Blade Complete Welded Assembly	32.45	33	205 N	Nut	.03
15	160 S	Screw	.10	34	A-148	Drive Shaft Housing	5.09
16	308 W	Washer	.01	35	SB 332	Clamp Stud	.11
17	211 N	Nut	.04	36	SB 330	Clamp	.17
18	SB 101	Gear Housing	9.86	37	SB 331	Clamp Nut	.66
19	SB 335	Gear Housing Gaskets	.11	38	903-G	Grease Fitting	.11
				N/N	SB 337	Wearing Strip	1.98
				N/N	141-S	Wearing Strip Bolt	.07

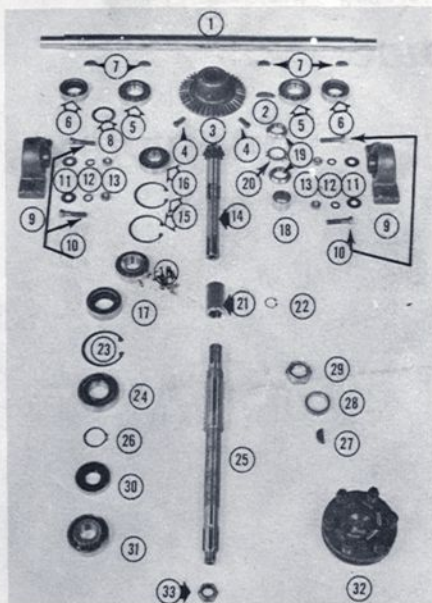


PLATE SB-2 Snowblower Internal Parts

Photo No.	Part No.	Description	Price
1	SB 305	Reel Shaft	5.78
2	509-K	Woodruff Key	.02
3	SB 301	Bevel Gear	9.35
4	807-A	Set Screw	.13
5	RB 106-C	Bearing (Cone)	2.48
	RB-106-R	Bearing (Cup)	1.49
6	OS 108	Oil Seal	1.76
7	508-K	Woodruff Key	.02
8	SB 336	Adjusting Shim	.09
9	SB 329	Pillow Block Bearing	6.88
10	137-S	Screw	.06
11	403 W	Washer	.01
12	305-W	Washer	.01
13	205 N	Nut	.03
14	SB 302	Bevel Pinion Shaft	9.79
15	RR 206	Retaining Ring	.50
16	RB 107-C	Bearing (Cone)	2.48
	RB 107-R	Bearing (Cup)	1.49
17	OS 109	Oil Seal	1.27
18	SB 324	Spacer	.39
19	SB 327	Bearing Lock Nuts	.55
20	SB 333	Bearing Nut Lock Washer	.17
21	SB 304	Coupling	.99
22	RR 201	Retaining Ring	.22
23	RR 207	Retaining Ring	.28
24	BB 106	Bearing	4.24
25	SB-300	Fan Shaft	4.73
26	RR 105	Retaining Ring	.22
27	508 K	Woodruff Key	.02
28	SB 328	Hub Spacer	.33
29	225 N	Nut	.50
30	OS-112	Oil Seal	1.14
31	RB-113-C	Bearing (Cone)	2.48
	RB-113-R	Bearing (Cup)	1.49
32	N/N	Slip Clutch Assy, splined	10.31
33	227-N	Nut	.23
	NS	A-474 Oil Seal Retainer	.11

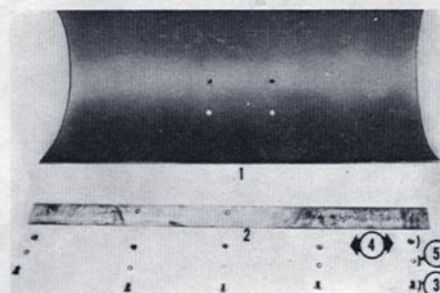


PLATE SP-1

Blade

Photo No.	Part No.	Description	Price
1	A 313	Snow Plow Blade	24.20
2	A 334	Wearing Strip	3.08
3	141-S	Wearing Strip Bolt	.07
4	214-N	Wearing Strip Nut	.02
5	304-W	Wearing Strip Bolt Lock Washer	.01
NS	A 442	Skid, each	.47
	198-S	Skid Bolt	.13
	214-N	Skid Bolt Nut	.03

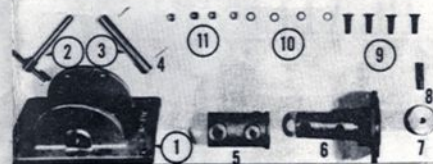


PLATE SP-2

Hitch

Photo No.	Part No.	Description	Price
1	A 119	Bracket	13.04
2	A 343	Adjusting Bolt and Handle	1.40
3	A 332	Knuckle Pin	.99
4	607-C	Cotter Pin	.01
5	A 122	Swivel Casting	5.62
	M 101-A	Mounting Stud	5.09
6	A 344	Thrust Plug and Pin	1.60
7	176-S	Bracket Screw and Blade Bolt	.15
8	305-W	Blade Bolt Lock Washer	.01
9	205-N	Blade Bolt Nut	.03
10	124-S	Thrust Plug Bolt	.07
11	205-N	Thrust Plug Bolt	.03

"PRINTED IN U.S.A."